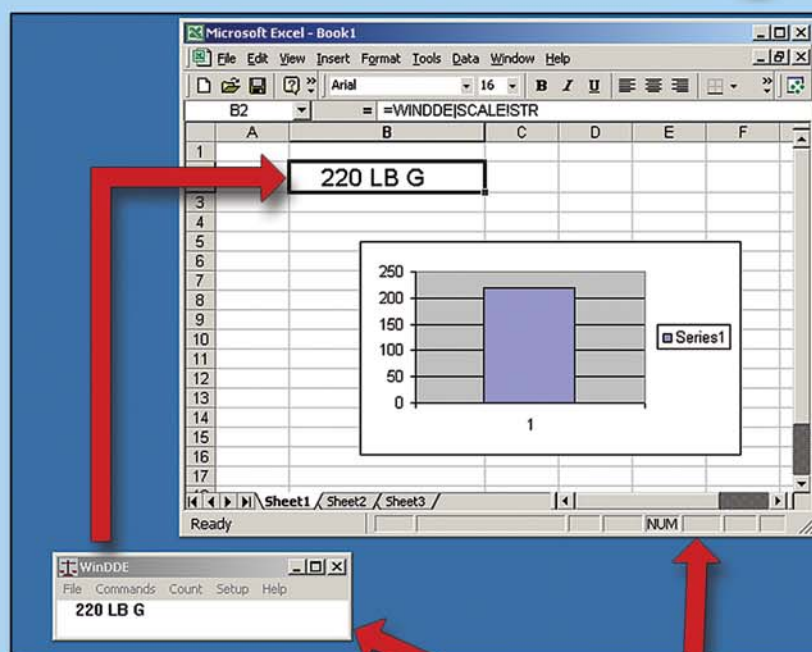


Your Weight in Windows®

Dynamic Data Exchange

WinDDE



Cardinal's WinDDE 2.0 Server communicates with up to 20 weight indicators attached to a computer. Weight indicators may be connected using standard computer serial ports or via ethernet using TCP/IP. The weight and status of the weight indicators is made available to spreadsheets, databases, and industrial control applications by means of Dynamic Data Exchange, or NetDDE for networked computers.

Microsoft Excel®, Microsoft Access®, Wonderware

InTouch®, Automation Direct®, Lookout Direct®, and Rockwell Automation RSView® are just a few of the well-known applications which can be used with WinDDE.

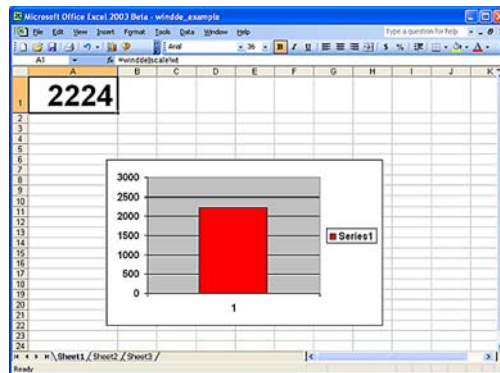
Weight and time stamp information may be automatically captured to Excel® creating a new row of information for each stable weight above threshold. Alternatively, the capture feature may be based on the indicator print button to capture a row of data each time the print key is pressed on the indicator.

WinDDE 2.0 Features

Weight Monitoring

Industrial Control Software such as Rockwell RSView®, Automation Direct®, Lookout Direct®, and spreadsheet programs, such as Microsoft Excel® may be used.

- A spreadsheet cell, such as A1, shows continuously updating weight.
- The spreadsheet may show a continuously updating bar graph.
- Formulas in the spreadsheet may show a flashing indication if the weight exceeds or drops below certain levels.
- The WinDDE command for the spreadsheet to read weight is simply =windde|scale|wt

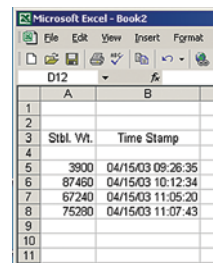


Automatic Stable Weight Capture to Excel®

After a weight is placed on the scale and the indicator sees a stable weight, the weight is placed in a spreadsheet cell, such as A5. The operator removes the weight, and the procedure is repeated, but the weight value is placed in the next spreadsheet row, such as A6.

Printer Port Capture to Excel®

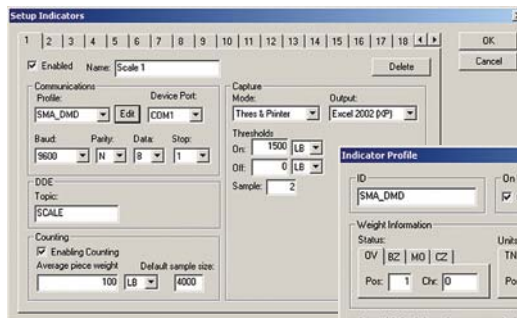
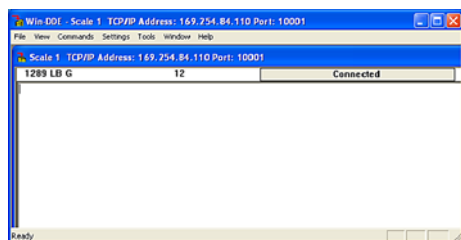
After a weight is placed on the scale, the operator at the indicator may press the Print key on the indicator. Instead of printing, the printout information from the indicator is sent to the computer. The computer sets the spreadsheet cells, such as E3 Gross Weight, F3 Tare Weight, G3 Net Weight, etc. The operator then may remove the weight, and the procedure is repeated, but information is placed in the next spreadsheet row, such as E4, F4, G4, etc.



Print Time Stamp	Gross	Tare	Net	Consec #	ID
04/15/03 09:26:41	3900 lb	2400 lb	1500 lb	137	3400
04/15/03 09:27:02	4680 lb	3900 lb	780 lb	138	123
04/15/03 09:29:21	74560 lb	32420 lb	42140 lb	139	5655

Computer Data Collection

After a weight is placed on the scale, the operator may type information at the computer, such as an ID number to associate the weight. The computer stores the information in a database or spreadsheet. The operator then may remove the weight.

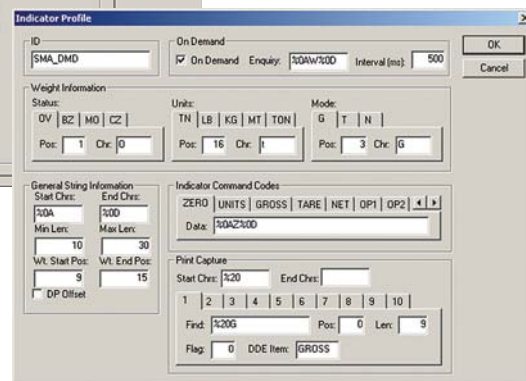


Weight indicators may be connected via ethernet using TCP/IP (pictured above) or standard computer serial ports.

WinDDE Indicator Setup

With certain weight indicators, such as the Cardinal model 220, weight monitoring, automatic stable weight capture to Excel® and printer port capture to Excel® can be used simultaneously.

Windows® 2000 or XP must be used if more than ten indicators will be connected.



Indicator Profile



Sold By:

